

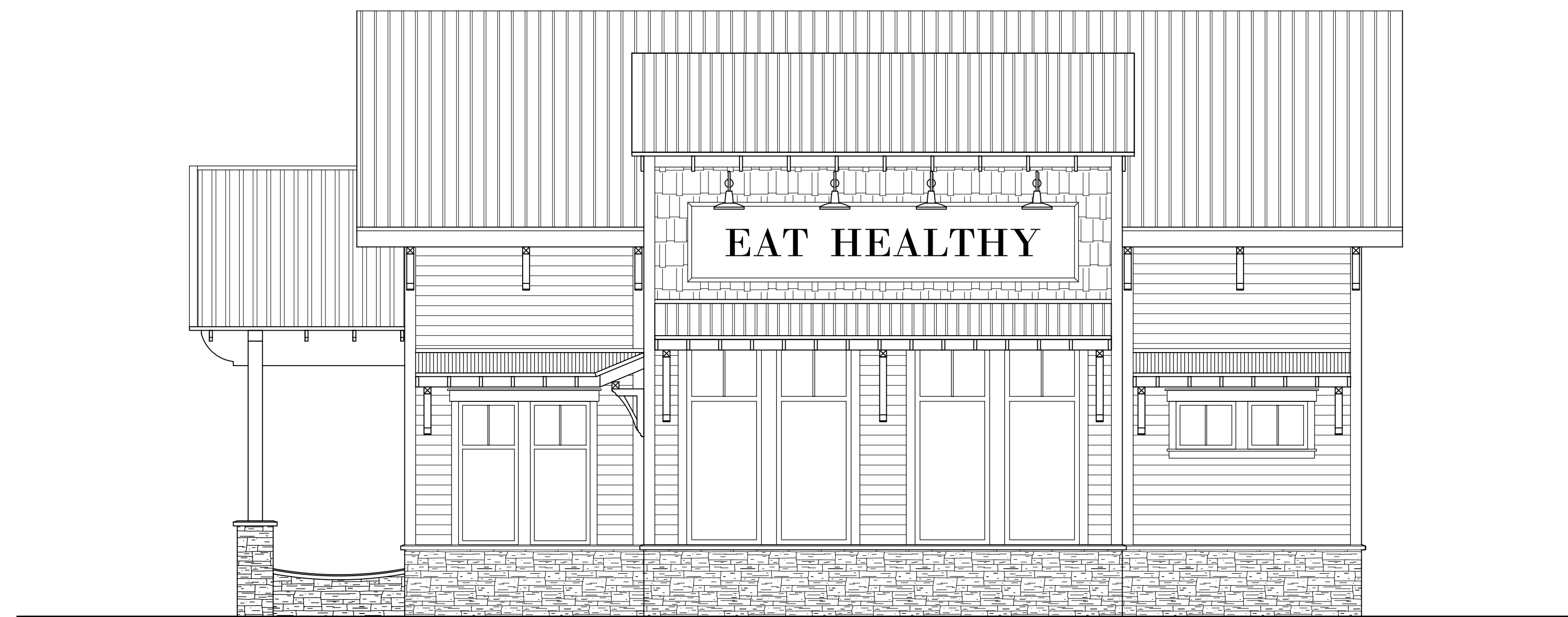
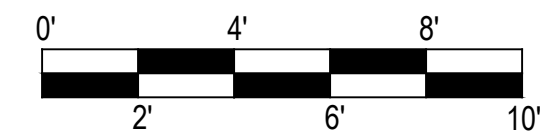
DESIGN WORKS

COBB COUNTY:
1480 Shiloh Road NW
Suite #300
Kennesaw, GA 30144
Phone 770.790.3655
Fax 770.790.3650

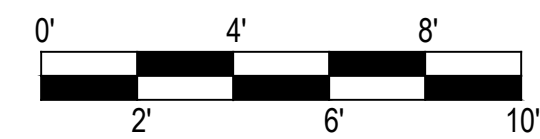
FANNIN COUNTY:
722 Black Dog Trail
P.O. Box 639
Blue Ridge, GA 30513
Phone 706.374.4304



A SOUTH ELEVATION (VIEW FROM SUBDIVISION DRIVE)
SCALE: 1/4" = 1'-0"



B EAST ELEVATION (VIEW FROM BELLS FERRY RD)
SCALE: 1/4" = 1'-0"



TITLE: EXTERIOR ELEVATIONS

PROJECT: EAT HEALTHY
OVERLOOK AT SIXES ROAD PARCEL B
CHEROKEE COUNTY, GEORGIA

ISSUE:	REVISIONS:

SEAL



DRAWN BY: K.W.	DATE: 09.07.2016
PROJECT NO.: 1664	SHEET NO.: A-4.1

Eat Healthy will be on Parcel B.

Preliminary Plan

Overlook at Bridgemill

Cherokee County, Georgia Land Lots 293 & 294, 15th District

prepared for:

Province Development, Inc.

Parcel B - Restaurant / Retail

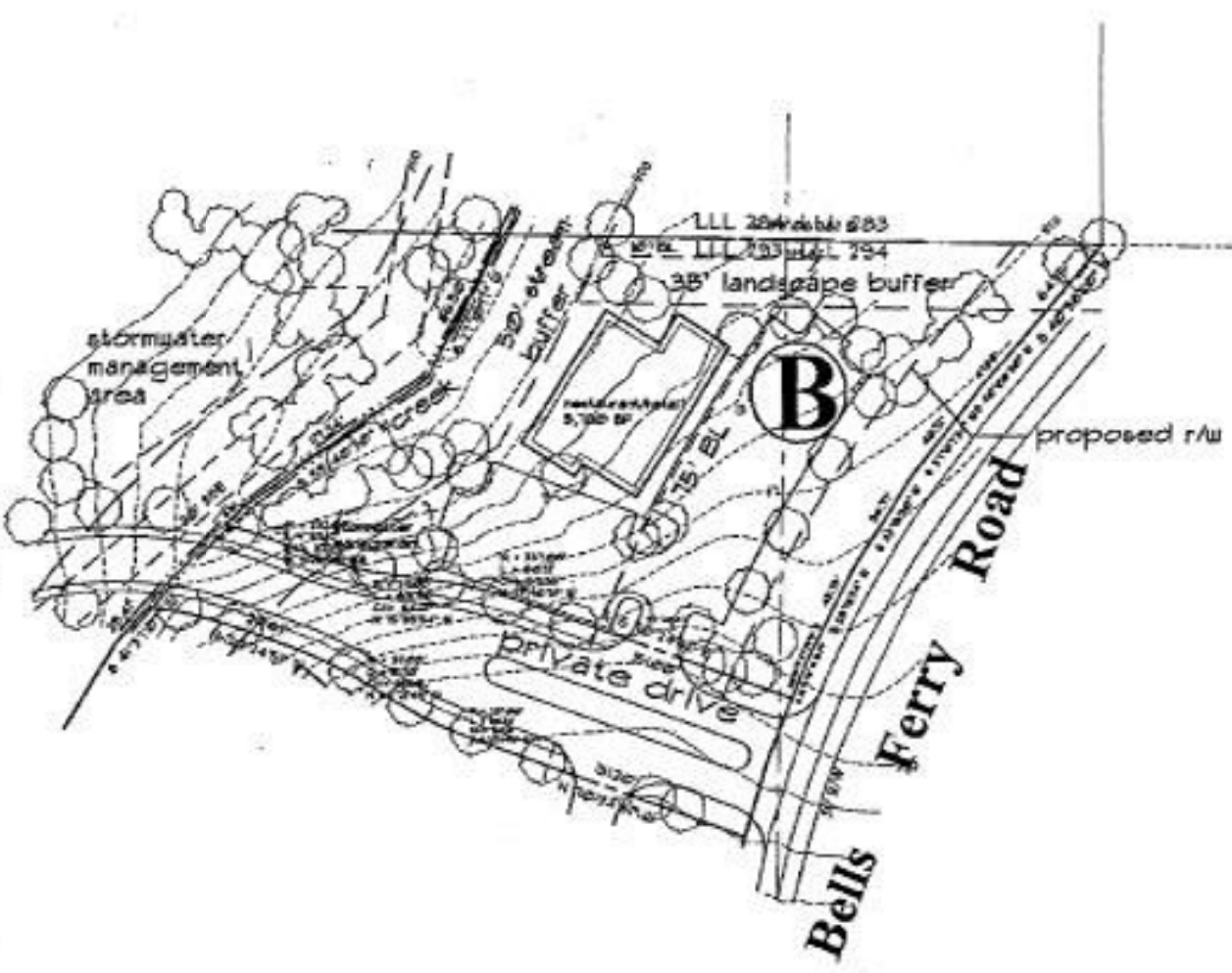
Area: 1.43 AC

DGM

LAND PLANNING
CONSULTANTS



775 Cox Place
Lawrenceville, GA 30044
770 581-9956
Fax 514-7411



Notes:

1. Boundary survey and topographic information compiled by Southern Civil Engineers.
2. According to Flood Insurance Rate Map (FIRM) #3051C0214B, August 18, 1982, no portion of this site contains floodplain.
3. No cemeteries are known to exist on site.
4. Stream and wetland classifications are to be determined.
5. No archeological or architectural landmarks are known to exist on site.
6. Sanitary sewer easements are known to exist on site.
7. Stormwater management and water quality structures are conceptual in size and will be revised based on hydrologic study.



February 28, 2005

Revisions:

NO.	DATE	DESCRIPTION

Preliminary Plan

Overlook at Bridgemill

Cherokee County, Georgia Land Lots 293 & 294, 15th District

prepared for:

Province Development, Inc.

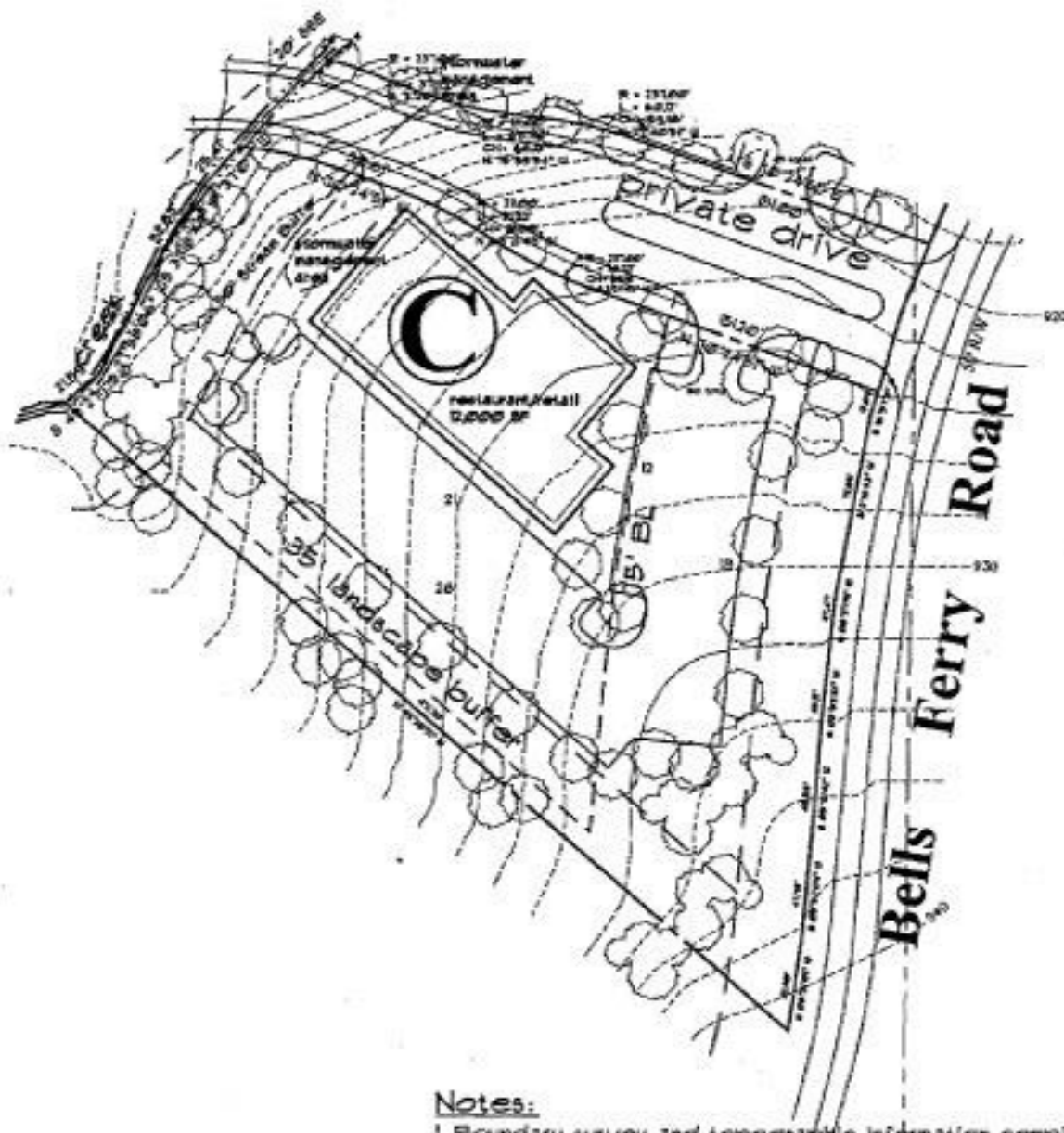
Parcel C - Restaurant / Retail

Area: 2.01 AC

DGM
LAND PLANNING
CONSULTANTS



975 Cox Run
Box 50012
ANNISTON, GA 30214
770 514-8266
Fax 514-9491



Notes:

1. Boundary survey and topographic information compiled by Southern Civil Engineers.
2. According to Flood Insurance Rate Map (FIRM) #3057C0214B, August 18, 1992, no portion of this site contains floodplain.
3. No cemeteries are known to exist on site.
4. Stream and wetland classifications are to be determined.
5. No archeological or architectural landmarks are known to exist on site.
6. Sanitary Sewer easements are known to exist on site.
7. Stormwater management and water quality structures are conceptual in size and will be revised based on hydrologic study.

Revisions:

NO.	DATE	DESCRIPTION
000001		As Shown
000002		
000003		
000004		
000005		



Scale: 1" = 40'

February 28, 2005